

SPIKKEL

THE PREMIUM SOLUTION FOR RENOVATION

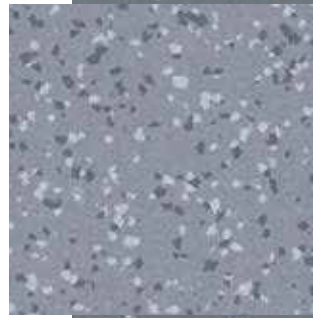


# PATCHWORK

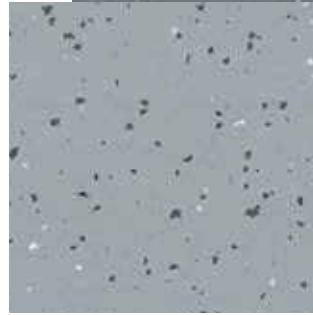




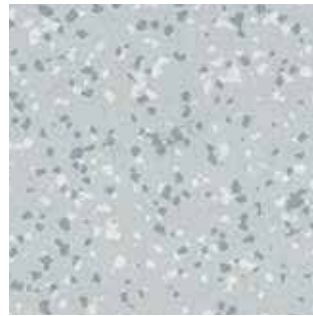
REDISCOVER THE TARALAY PREMIUM RANGE  
IN THE LOOSELAY SPIKKEL FORMAT  
FOR A EASY AND LONGLASTING RENOVATION



3709 - Ceara



4003 - Tao



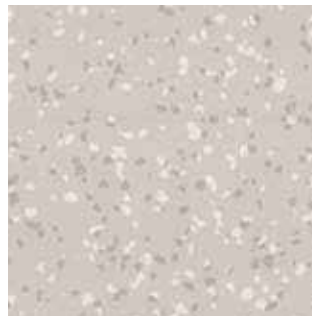
8736 - Recife



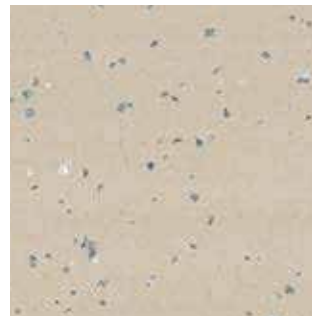
4351 - Greige



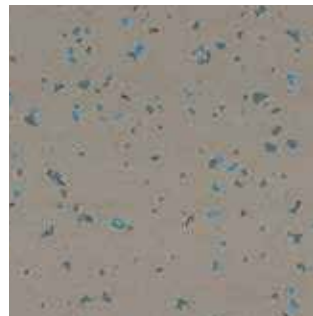
8386 - Boa Vista



4342 - Juara



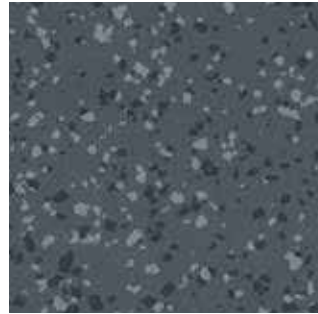
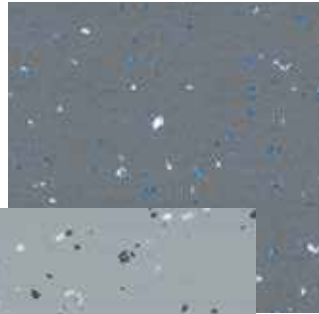
4343 - Tokelau



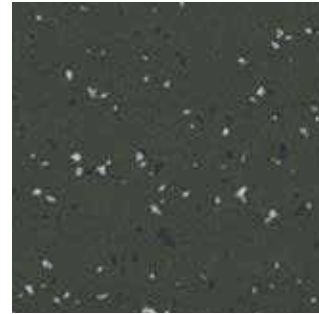
8053 - Anambas



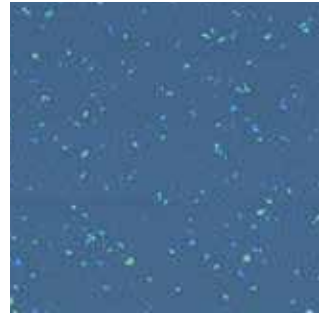




3707 - Paraiba



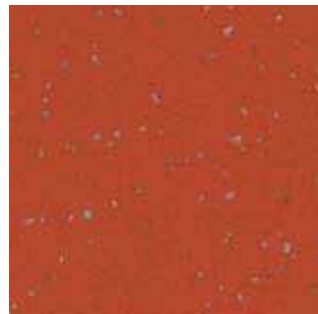
8837 - Songo



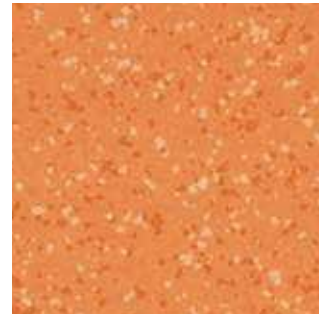
4476 - Wattaru



4003 - Tao



4146 - Moheli



8157 - Goias



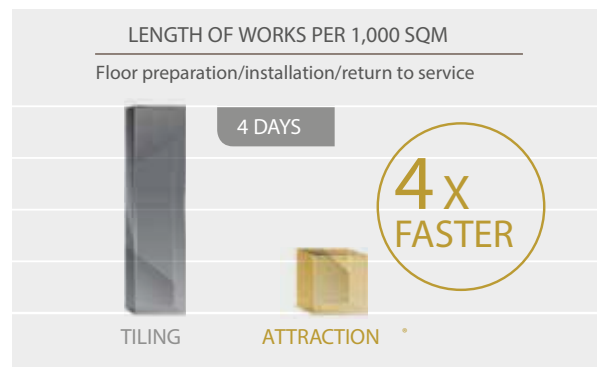
8577 - Amazonas



## INSTALLATION ON ANY TYPE OF SURFACE



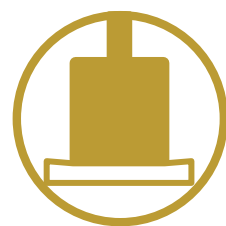
## NO NEED TO STOP WORK



- | Fast loose-lay installation allowing the area to remain open
- | Clean installation - no adhesive or dust
- | A 2 person team can install up to 200m<sup>2</sup> in 8 hours



## HARD-WEARING



- | Tiles double pressed at over 3,000 T



- | 1mm wear layer



- | Protcsol® 2 surface treatment enabling easy maintenance
- | Exclusive patented Gerflor design

## USER COMFORT & SAFETY



- | 19 dB less noise than tiling when users walk on it
- | Underfoot comfort: reduces fatigue



- | More slip-resistant than other types of surface (R10 rated)



- | 4 x less hazardous than tiling in the head impact assessment (Standard 1177: head impact - 66 cm vs. 10 cm)



## DESIGNS & LAYOUT

- | Easy to install: modular tile format
- | Wide range of designs available



635 x 635 mm





# ALL THE BENEFITS OF PROTECSOL<sup>®</sup> AND MUCH MORE!

PROTECSOL<sup>®</sup> 2 technology combines all the benefits of Protecsol<sup>®</sup>, a solution that has been tested and approved for over 20 years: easy to maintain, no metallisation for life, saves on water and detergents with 2 additional benefits :

## STAIN SHIELD EVEN FOR THE MOST STUBBORN STAINS



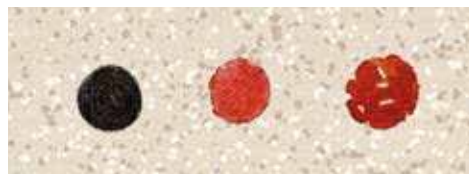
The waterproofing effect of PROTECSOL<sup>®</sup> 2 prevents any infiltration of staining agents (alcoholic Eosin and Betadine, hydro-alcoholic gels, etc.) so these remain on the surface.



All other products on the market allow staining agents to infiltrate the flooring.

### STAINING TESTS

Marker / Eosin / Betadine



### RESULTS AFTER CLEANING

Neutral detergent used	ATTRACTION <sup>®</sup>	Printed flooring / Transparent wear layer	Standard flooring / single layer	Coated flooring / Expanded PVC	Rubber flooring
After 10 min					
After 1h					

Full stain resistance table available on request



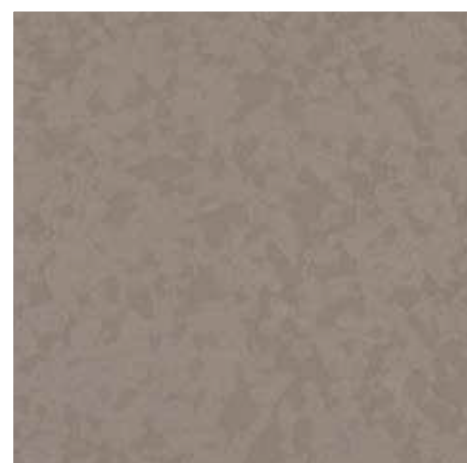
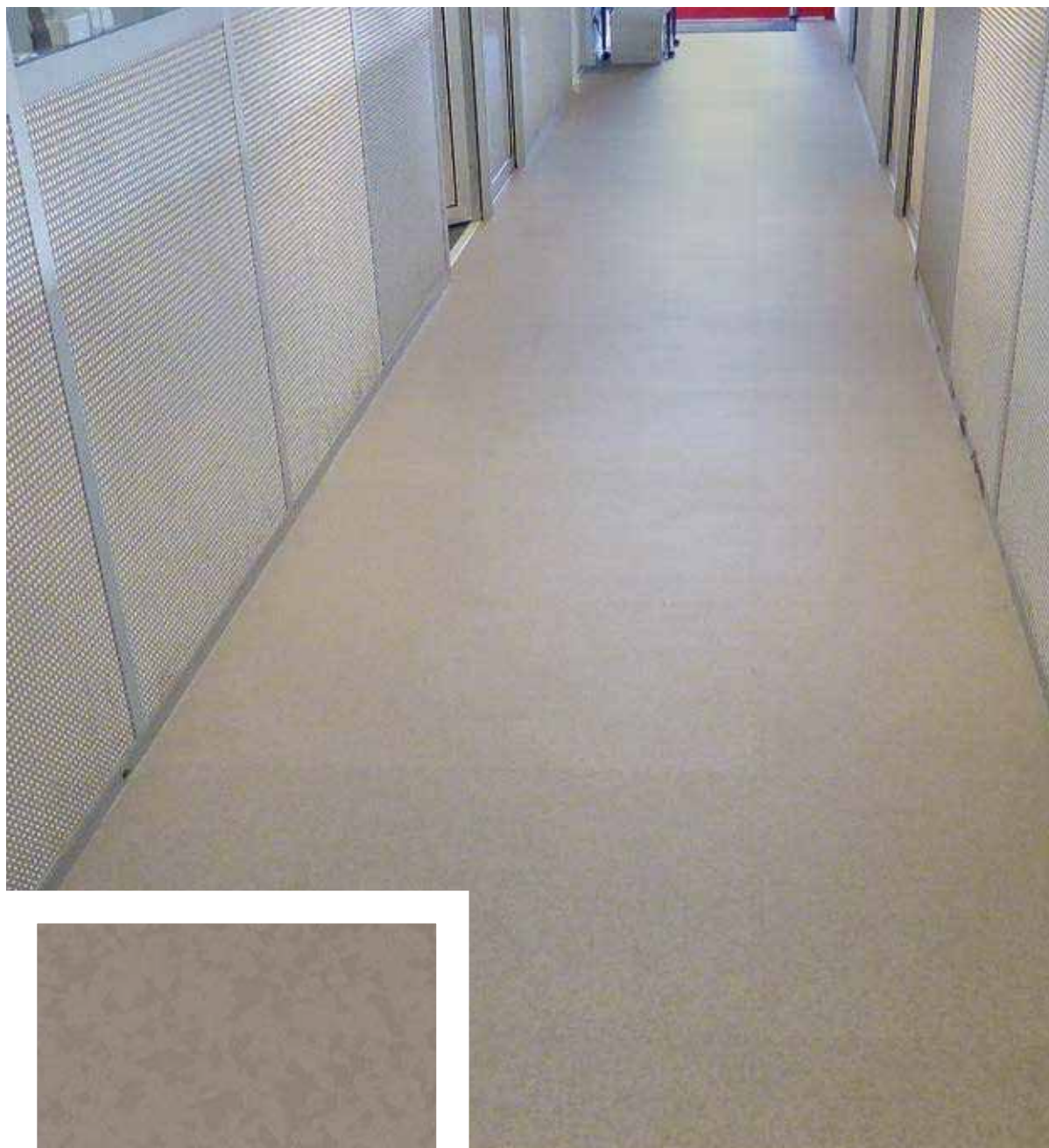
## MATT EFFECT

ENHANCES THE MATERIAL





# NEW DESIGN EXCLUSIVELY NATURAL



4351 - GREIGE



This exclusive design based on natural mineral particles may cause variations in the shine of individual tiles.





# TRIAL BY EXPERIENCE



## HIGH SCHOOL RENOVATION FOLLOWING AN ASBESTOS ASSESSMENT

“ We were quick to choose these tiles as they are simple and fast to install and withstand traffic.

School headteacher



## RENOVATION OF COMMUNAL AREAS IN A SOCIAL HOUSING BLOCK

“ We chose these tiles because we were able to carry out work in an occupied environment without disturbing the occupants (they could access their flats, there was little noise and the work generated no dust).

Social landlord



## SCHOOL CONSTRUCTION

“ When we were choosing the flooring, our project was behind schedule. I also wanted an all-over surface without any joins. When suggested that we install this system, I was immediately thrilled by the idea!

Architect



# FULL SOLUTION

100% LOOSELAY FLOORS AND FINISHES

## FINISHING SOLUTIONS

### CORNER & ACCESS

┆ Corners



THE +

┆ All Attraction \* colours available

┆ Access (access ramp)



### ALUMINIUM RAMP

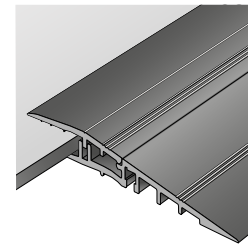
┆ Quick to install and can be removed without causing any damage

┆ Elegant and durable aluminium

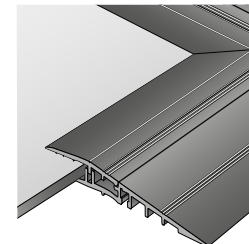
THE +

┆ Withstands intensive footfall

┆ Unique 100% looselay system



0609 - Ramp



0629 - Corner

### ENTRY MAT



1719 - Romat GT

┆ Same thickness as tiles

┆ Full kit ready-to-lay including the mat, frame sections and fastenings

┆ Withstands intensive footfall

THE +

┆ Surface not damaged (no adhesives or screws)

┆ Full 100% looselay system (no adhesives or screws)





## TAILOR-MADE SOLUTION

### MY LOGO



- † Create your logo using our water jet cutting system.
- † The logo is produced using the finished product.

#### THE +

- † Withstands intensive footfall without fading.

## 100% WATERPROOF SOLUTION

### CLEANTECH TILE

- † Square with straight edges
- † Heat seamable

#### THE +

- † Enables a waterproof surface



600 x 600 mm





**LESS ADHESIVE MORE RECYCLING**



- COMPOSITION**  
100% REACH COMPLIANT
- Free of formaldehyde
  - Free of heavy metals
  - Free of solvents



- RECYCLED CONTENT**
- Recycled content 80%
  - 100% REACH compliant recycled content



- LIFE CYCLE ANALYSIS**
- Eco-designed according to a product specific Life Cycle Analysis
  - Product specific EPD (Environmental Products Declaration) available
  - Manufactured in an ISO 14001 and ISO 50001 certified site
  - Contribution to many Green Building Schemes (LEED, HQE, BREEAM.)
  - Patented surface treatments ProtecSol® 2 to reduce drastically the use of chemical products and water and ensure the lowest environmental impact



- RECYCLING**
- 100% recyclable product



- INSTALLATION**
- Adhesive-free installation



- INDOOR AIR QUALITY**
- TVOC emissions 100 times better than norm requirements (TVOC < 10 µg/h after 28 days)
  - Floorscore certified
  - M1 certified
  - Comply with AgBB protocol
  - No formaldehyde emission



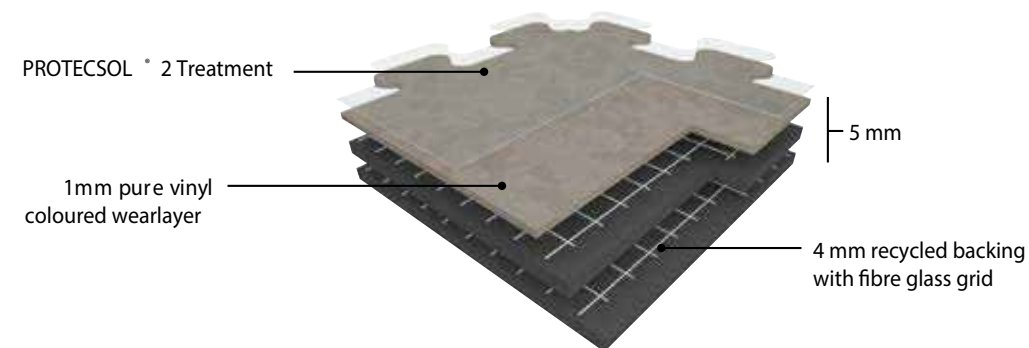




# TECHNICAL DATA

U

R10 - A.T. N°12/11-1604



this tile is a semi-flexible tile constructed by compacting, at high temperature and over 3000 T, a 4mm recycled backing and a 1mm pure vinyl wear layer. This wear layer is incorporating very densely pressed coloured chips, with a mat finishing and without a transparent wear layer.

The product comprises a compact backing which is pressed and reinforced with two glass fibre grids.

It has a unique dovetail joint which allows fast loose lay installation and replacement.

It is treated with a surface treatment obtained by UV laser crosslinking.

This ensures easy maintenance and eliminates permanently the need for acrylic emulsion (metallisation).

It avoids staining of chemical products used in healthcare like iodine alcohol, Betadine, eosin and anti-bacterial hand gel.

It has a B fl-s1 fire classification in accordance with standard EN 13501-1. The products emission rate of volatile organic compounds is  $<10\mu\text{g}/\text{m}^3$  (TVOC after 28 days - ISO 16000-6).

It is made of 100% controlled recycled materials.

It does not contain any heavy metals or CMR 1&2 and they are 100% compliant with REACH.

It is 100% recyclable and made with up to 80% recycled content.





DESCRIPTION			
Total Thickness	EN ISO 24346 (EN 428)	mm	5.00
Thickness of the wearlayer	EN ISO 24340 (EN 429)	mm	1.00
Weight	EN ISO 23997 (EN 430)	g/m <sup>2</sup>	7460
Size	EN ISO 24342 (EN 427)	mm	635 x 635 Connect / 600 x 600 Clean Tech

CLASSIFICATION			
Norm/Product Specification	-	-	EN ISO 10582 (EN 649)
European Classification	EN ISO 10874 (EN 685)	class	34-43
Fire Rating	EN 13501-1	class	Bfl-s1
Static Electrical Propensity	EN 1815	kV	<2
Slip Resistance Wet	DIN 51 130	class	R10

PERFORMANCES			
Wear Resistance	EN 660.2	mm <sup>3</sup>	≤ 2.0
Wear Group	(EN 649)	group	T
Type Binder content	EN ISO 10582	type	I
Dimensional Stability	EN ISO 23999 (EN 434)	%	≤ 0.25
Residual Indentation	EN ISO 24343-1 (EN 433)	mm	≤ 0.10
Castor chair test	ISO 4918 (EN 425)	-	OK
Thermal Conductivity	EN ISO 10456 (EN 12 524)	W/(m.k)	0.25
Colour Fastness	EN 20 105 - B02	degree	≥ 6
Surface Treatment	-	-	ProtecSol <sup>®</sup> 2
Chemical Products Resistance	EN ISO 26987 (EN 423)	-	OK

ENVIRONMENT/INDOOR AIR QUALITY			
TVOC after 28 days	ISO 16000-6	µg/m <sup>3</sup>	<10
Certification	-	-	Floorscore <sup>®</sup>

CE MARKING			
	EN 14041		

PATCHWORK

Gentse Baan 75  
9100 Sint-Niklaas  
BE 0829 204 696

Interieur  
Delicatessen  
Broodjes

# PATCHWORK



## LESS SPEAKING, MORE ACTIONS



COMPOSITION  
100% REACH



INSTALLATION  
Adhesive free



INDOOR  
AIR QUALITY  
100 times lower  
than norms requirements  
(TVOC < 10ug/m<sup>3</sup> after 28 days)



RECYCLED  
CONTENT  
80%



RECYCLABILITY  
100%  
recyclable product



LCA  
Eco-designed  
according to a product  
specific Life Cycle  
Analysis